



How to improve
the Pasteur Network Preparedness
and Response to Outbreaks

Ridha BARBOUCHE M.D., Ph.D.
Institut Pasteur de Tunis
On behalf of the COS-PN

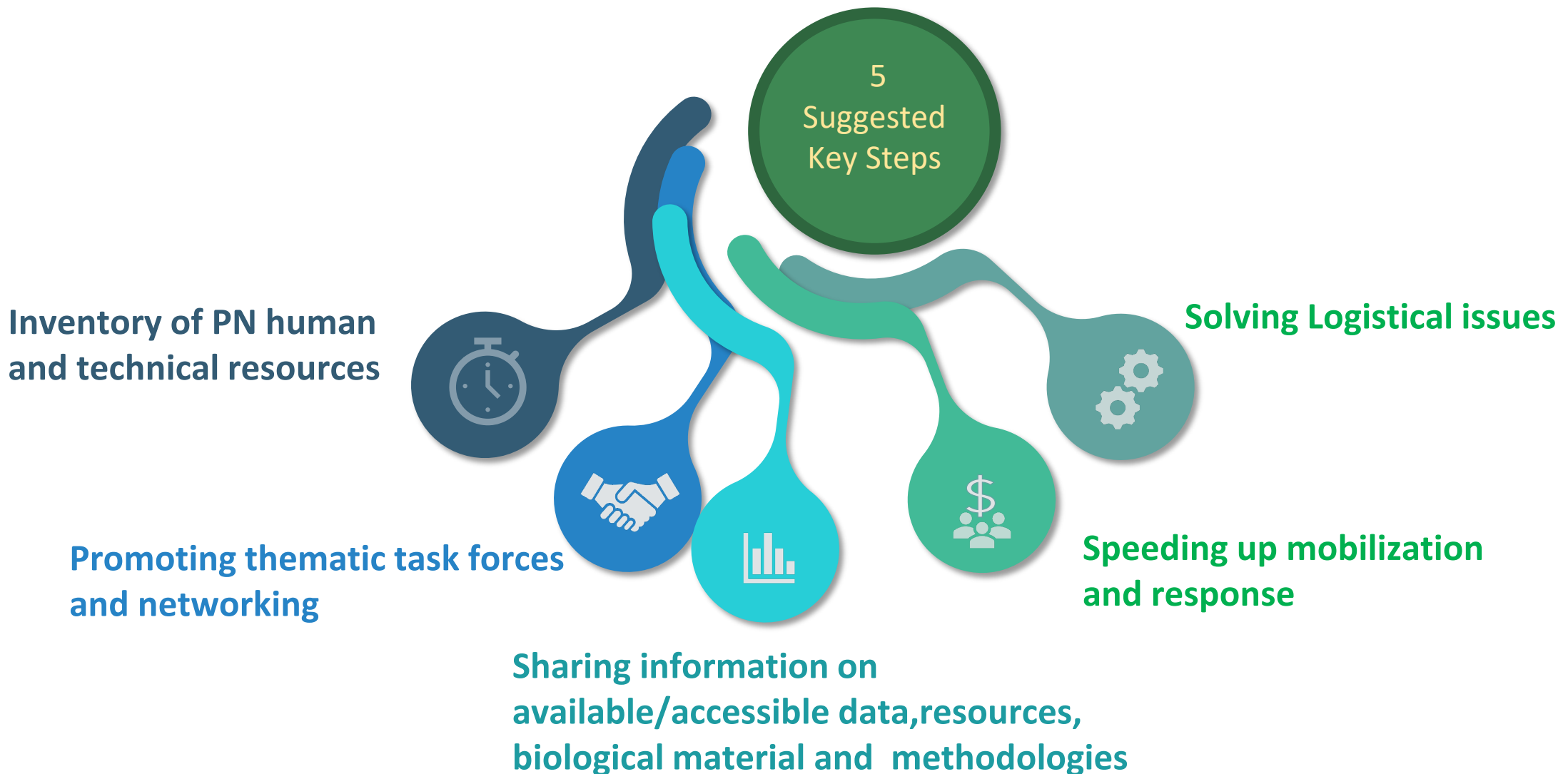
November 29th, 2022

Objectives of the proposed approach

Considering what has been learned from the newly emerging COVID-19 pandemic or the re-emerging monkeypox epidemic and other outbreak stories, the aims of the COS-PN proposed approach are:

- **To develop an inclusive approach that helps optimize the role of the PN in preparedness and response to outbreaks, particularly with regard to better integrated responses.**
- **To gain visibility and impact for the PN acting as a Global Network and help improve its positioning as such in on-going and future Global Initiatives (GOARN, CEPI ...)**

Suggested Key Steps for a better PN Preparedness and Response





PN vs Outbreaks Survey

C : Institut Pasteur

PN Outbreaks survey: the study concept

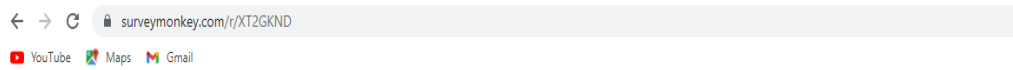
- A group of experts from the PN (11 institutes, 8 complementary expertise domains, all regions) was established to design the survey questionnaire.
- The questionnaire aims at identifying the official mission of the Institutes toward infectious disease emergencies, their current expertise and inventorying the human and technical resources they can mobilize.
- Not asking for sensitive information nor intruding into the national strategies of response to outbreaks.

PN Outbreaks survey : the Survey Content

- **Section 1: Institute information**
- **Section 2: Institute and key-persons expertise**
- **Section 3: Institute infrastructure and technical platforms**
- **Section 4: Collaborations and relationships within country and region**
- **Section 5: Samples and data sharing, Regulation and IRB**
- **Section 6: Logistics-shipping and procurement of materials and reagents**
- **Section 7: Biological resources**

PN Outbreaks survey: the online access link

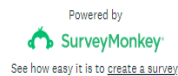
<https://www.surveymonkey.com/r/XT2GKND>



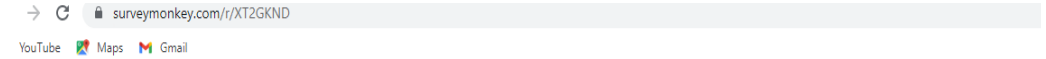
PASTEUR NETWORK VS OUTBREAKS

1. Welcome to My Survey

Thank you for participating in our survey. Your feedback is important.



[Privacy & Cookie Notice](#)



PASTEUR NETWORK VS OUTBREAKS

3. Section 2: Institute and key-persons expertise

Purpose: This section gathers information on the relevant expertise and knowledge in your institution related to response to outbreaks.

Of importance is the information on the potential to share the relevant expertise within the outbreak preparedness initiative: SOPs, protocols, and/or other information about lab work with emerging pathogens.

1. List of pathogens and/or infectious diseases that your Institute is particularly interested in (i.e., on which the institute is currently conducting or has conducted research/public health activities).



Preliminary results

PASTEUR NETWORK VS OUTBREAKS

Wednesday, November 02, 2022

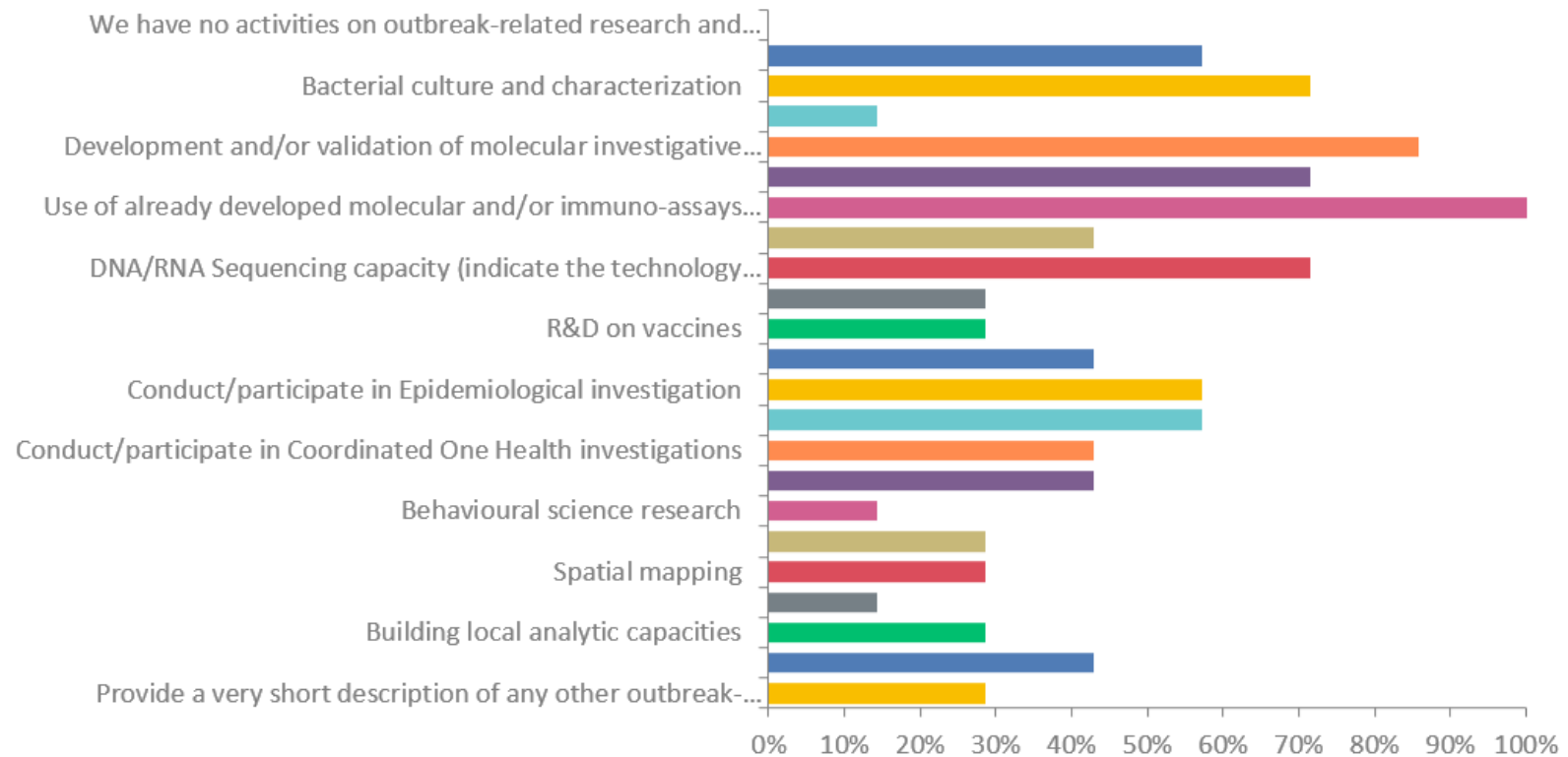
12 Responses

Powered by  SurveyMonkey

Preliminary results - *cont.* -

Q12: During an outbreak, which of the following activities in research/public health response could your Institute perform or advise on?

Answered: 7 Skipped: 5

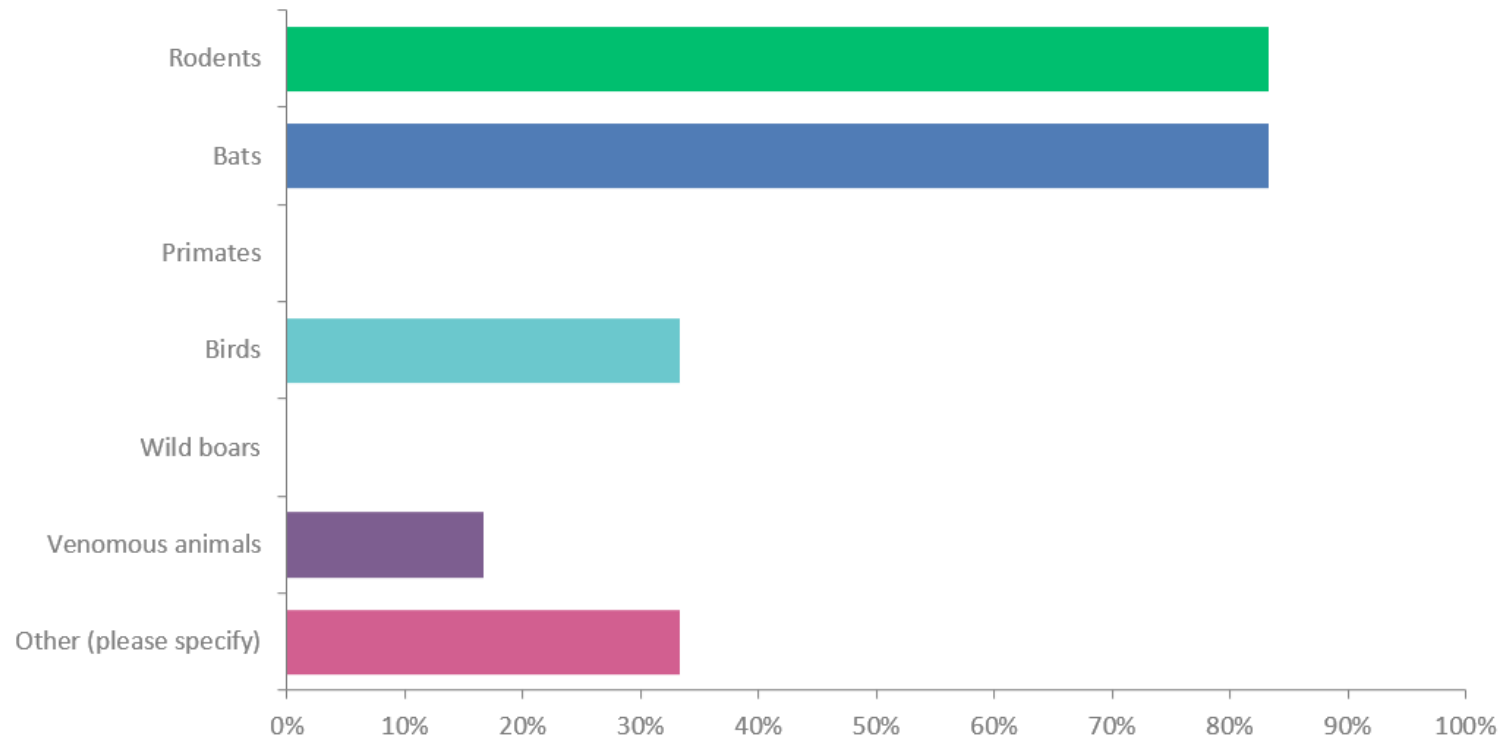


Powered by  SurveyMonkey

Preliminary results - *cont.* -

Q14: Indicate which types of wildlife fauna your teams have expertise in catching/investigating.

Answered: 6 Skipped: 6

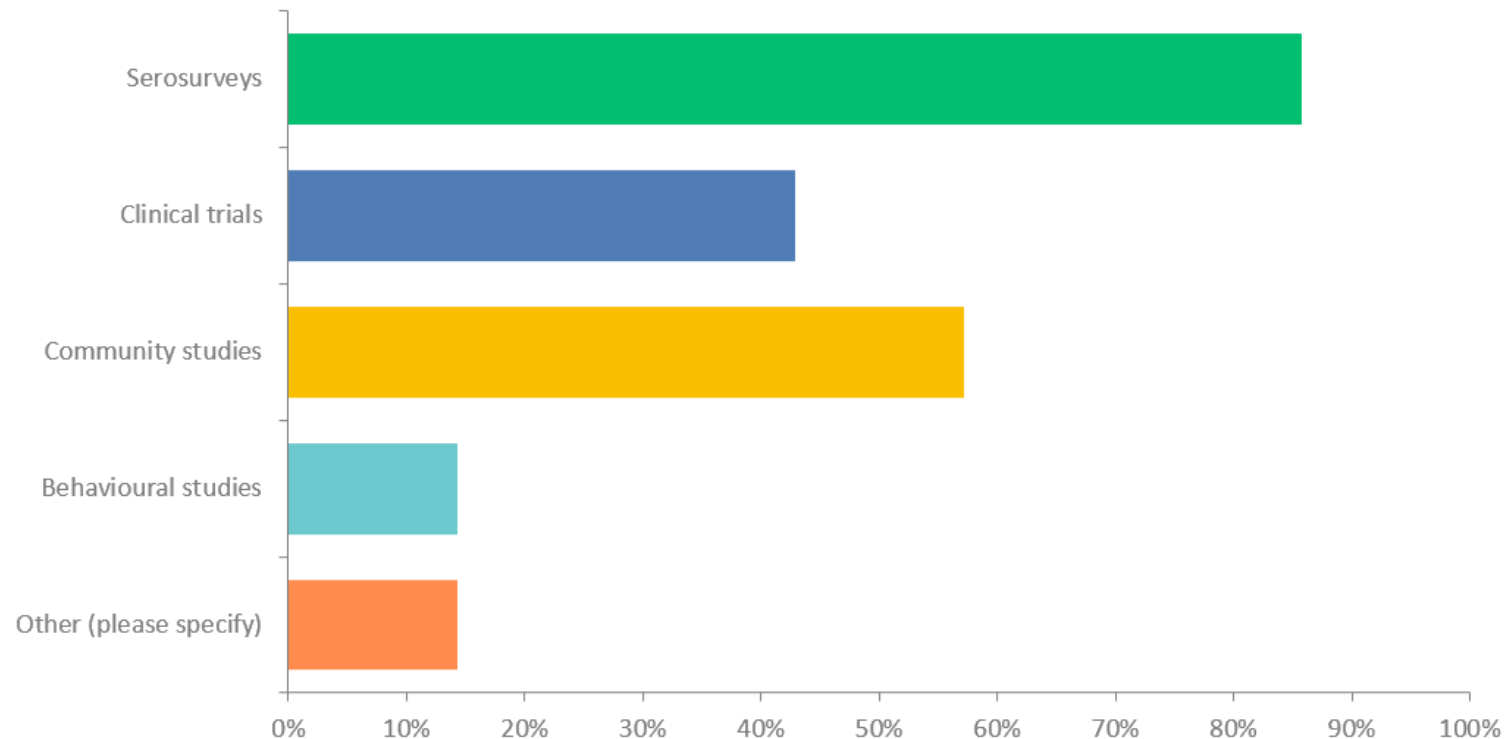


Powered by  SurveyMonkey

Preliminary results - *cont.* -

Q18: Indicate which types of studies you are able to perform on human populations?

Answered: 7 Skipped: 5

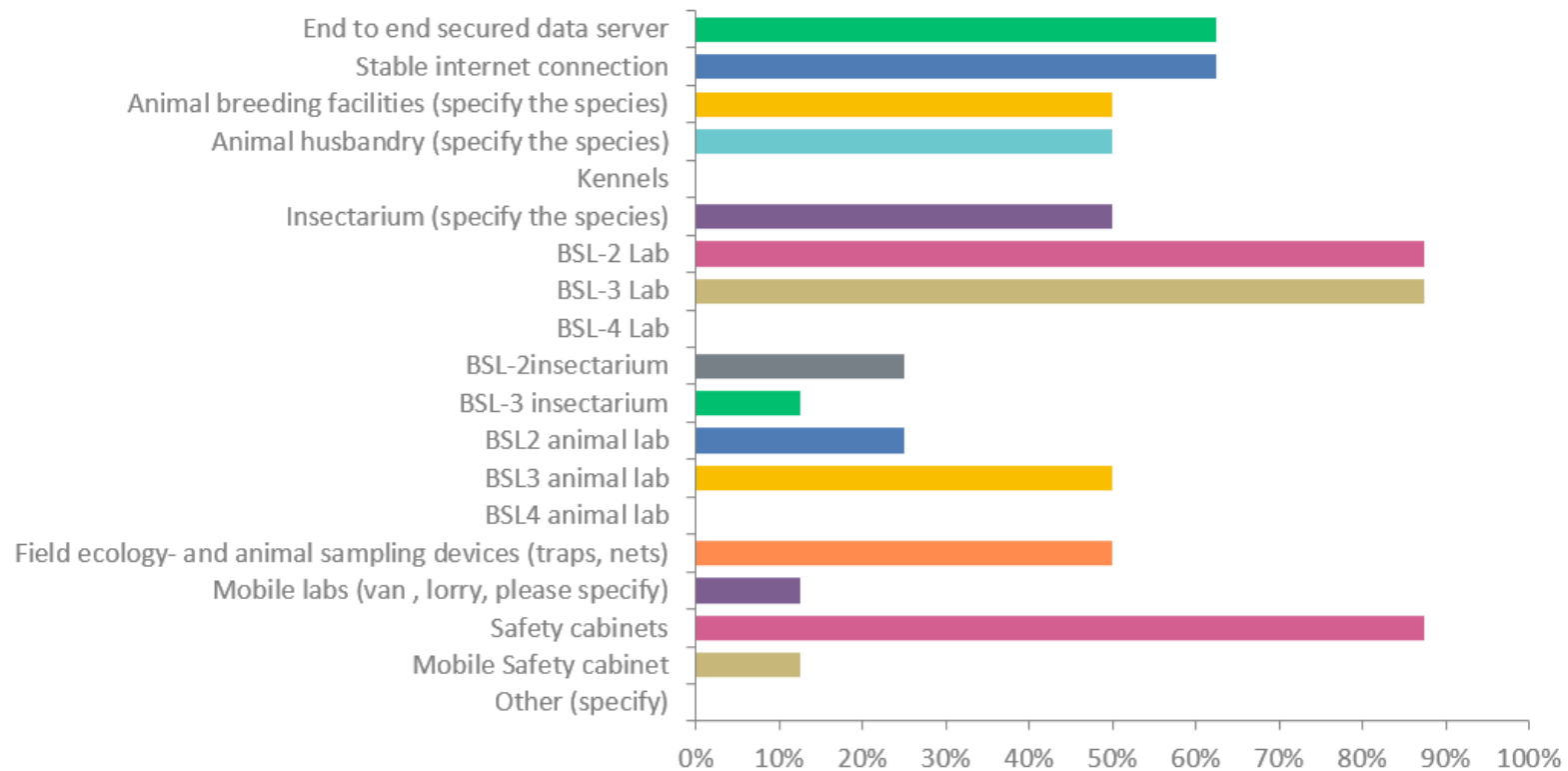


Powered by  SurveyMonkey

Preliminary results - *cont.* -

Q19: Indicate which infrastructure is available in case of an outbreak. To specify or complete your answer, please use the comment section.

Answered: 8 Skipped: 4

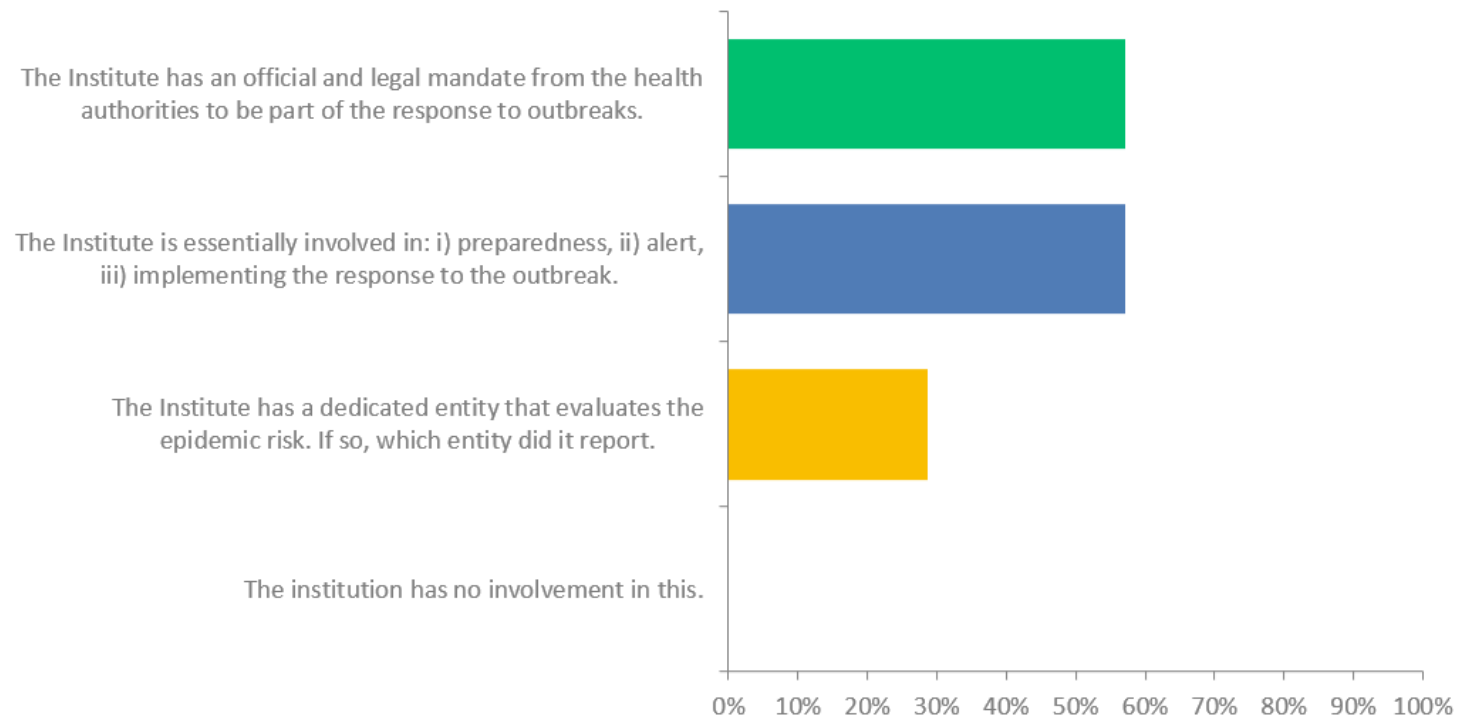


Powered by  SurveyMonkey

Preliminary results - *cont.* -

Q22: How is the Institution involved in the outbreak response at the country level?

Answered: 7 Skipped: 5



Powered by  SurveyMonkey



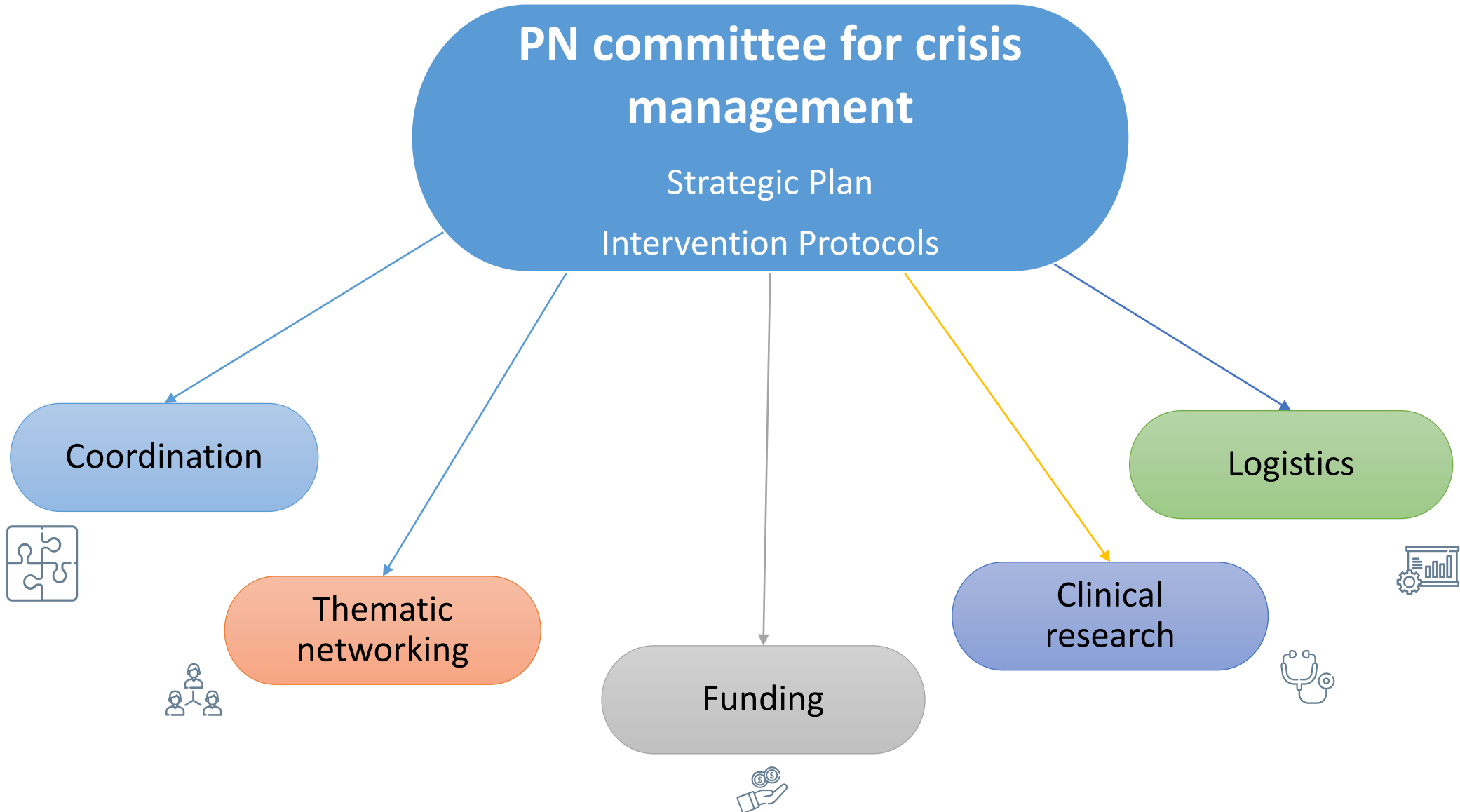
Next Steps

C : Institut Pasteur

Next Steps

- **To complete collection of data through the survey.**
- **To analyze information collected with the group of experts.**
- **To propose establishment of thematic task forces.**
- **To assess ability to network and share information/biological material, regionally and globally.**
- **To anticipate solutions to potential logistical issues.**
- **To establish written intervention protocols.**
- **To secure funding.**

The ultimate goal:



Acknowledgments

Group of PN experts:

Gamou Fall, Aliou Barry (*IP Sénégal*); Gary Wong (*IP Shanghai*); Veasna Duong, Ly Sowath, Benoit Witowski (*IP Cambodge*); Cyrille Goarant (*IP Nouvelle Calédonie*); Beza Ranasindrazana (*IP Madagascar*); Anubis Vega Rua (*IP Guadeloupe*); Christophe Batejat (*IP Paris*); Sophie Quoilin (*Sciensano Belgique*).

COS-PN members:

Anna-Bella Failloux (*Chair, IP Paris*); Ridha Barbouche (*IP Tunis*); Hein Min Tun (*HKU-Pasteur*); Patricia Beltrão-Braga (*USP Brazil*)

PN Association staff:

Rebecca Grais, Koussay Dellagi, Kathleen Victoir, Fatma Haidara

All PN Institutes contributing to the survey.